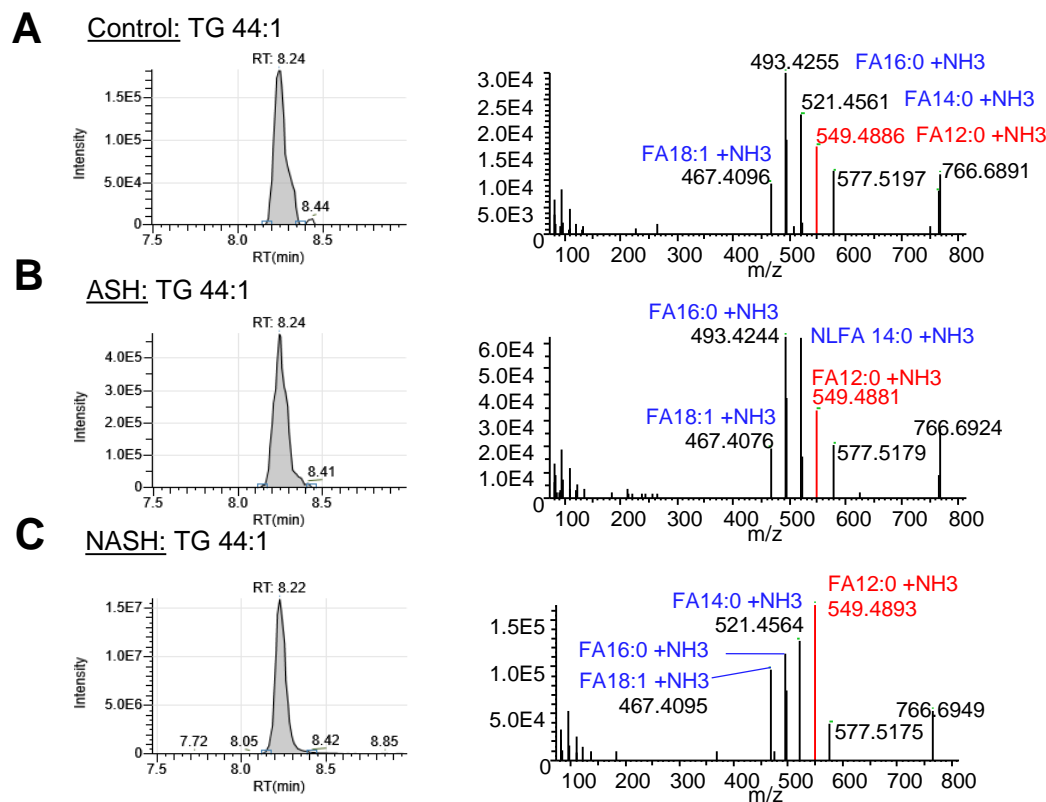


# Figure S3



**Figure S3:** Diet-specific changes in lipidomics. (A-C) Representative chromatograms and MS2 spectra for TG 44:1 in livers from healthy mice (panel A), ASH (panel B) and NASH (panel C).  $m/z = 549.4893$  and  $m/z = 521.4564$  correspond to the fragments that underwent the neutral losses of FA 12:0 + NH<sub>3</sub> and FA 14:0 + NH<sub>3</sub>, respectively (panel B).  $m/z = 199.1701$  and  $m/z = 227.202$  correspond to the hydrogen-loss fragments of FA 12:0 and FA 14:0, respectively (panels C, D).  $m/z$  signals corresponding to FA 12:0 and FA 14:0 are indicated in red and blue, respectively.